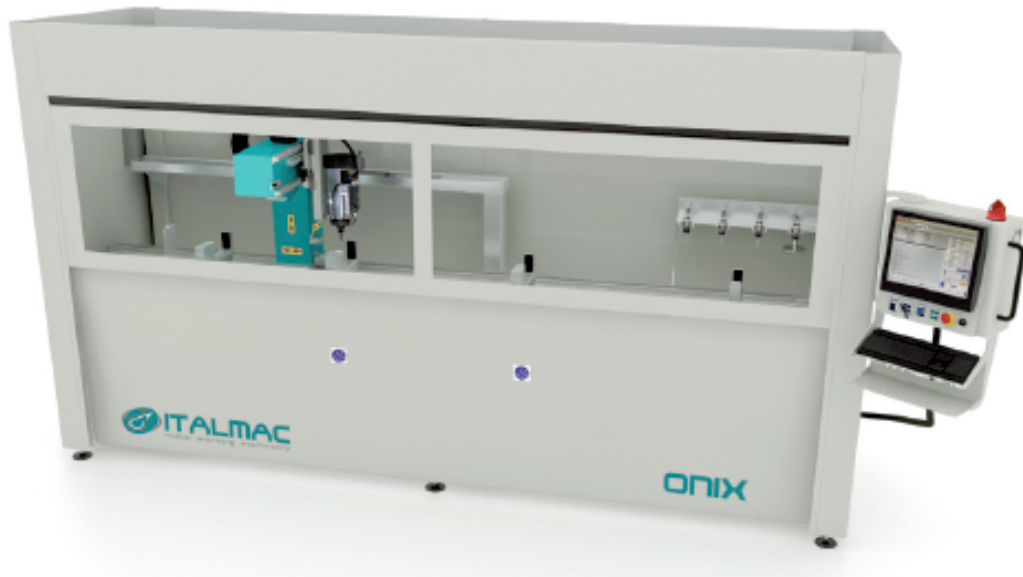




ITALMAC
INDUSTRIAL SOLUTIONS & INNOVATION



Onix 3300

3 Axis CNC Machining Centre

This 3-axis CNC machining centre has been especially designed to mill and drill bars and work pieces made of Aluminium, PVC, light alloys in general and steel. The Onix 3300 3-axis machine is especially useful for machining operations on 3 sides of the work piece. Complete with automatic tool changing facility as standard.

Options

Onix 3300 Standard Machine

This includes automatic clamps, long cut facility, dual operation depending on the size of the profile, left and right datum positioning, enclosure and 5 tools.

To add a 4th axis to either machine to give variable angle

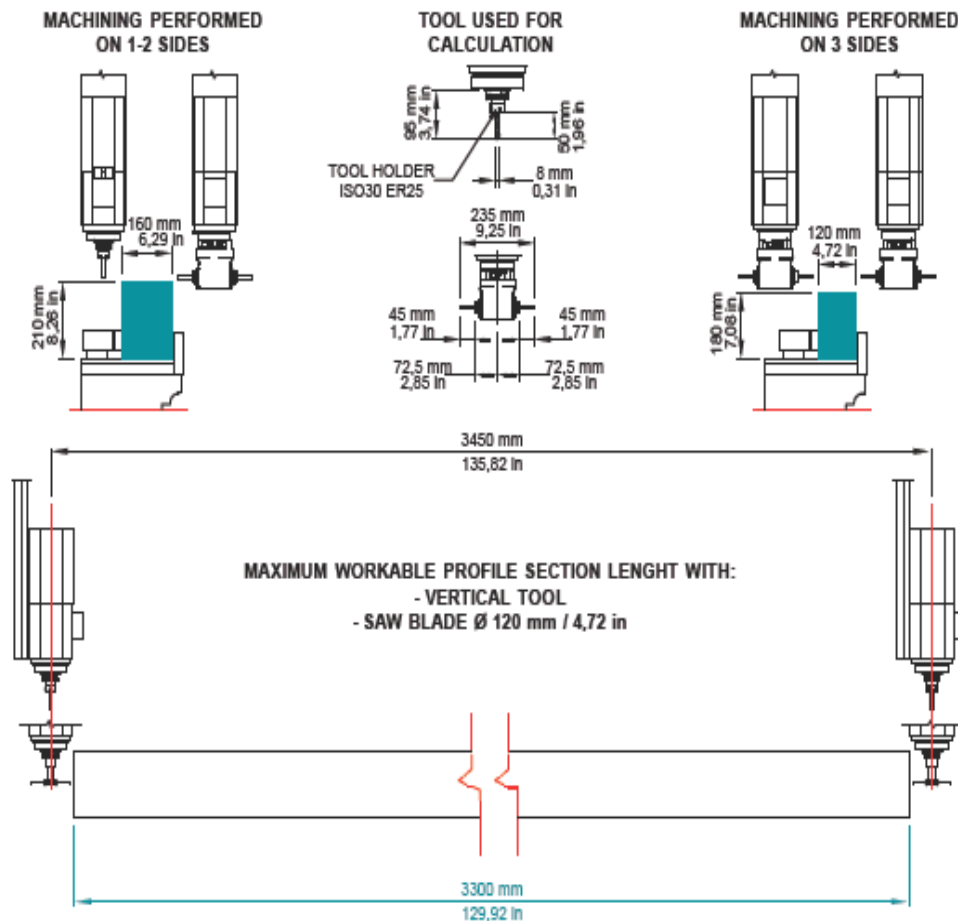
Bar code scanner

Camprox Software included

Technical Features

- Main structure made of Electro-welded steel and worked with CNC machine tools
- 3-Axis movement controlled by high precision brushless servo-motors
- Electric spindle 4kW with ISO 30 tool connection
- Tool magazine for 5 tools mounted on the base of the machine
- Manual Positioning clamps (automatic positioning optional)
- Maximum working length 3300mm
- Chips conveyor plate
- Full safety enclosure
- Optional angular head allows machining on the lateral faces of the work piece without re-positioning.

MAXIMUM WORKABLE PROFILE SECTION WITH VERTICAL TOOL AND ANGLE HEAD



General technical specifications ONIX			
	X AXIS	Y AXIS	Z AXIS
Max speed	40 m/min	40 m/min	15 m/min
Acceleration	1,5 m/sec ²	1,5 m/sec ²	2 m/sec ²
Motion system	Pinion / rack	Pinion / rack	Screw+screw ball
Motion type	Linear guides	Linear guides	Linear guides
Position sensing detector	Incremental encoder	Incremental encoder	Incremental encoder



ONIX 3300 - 3 axis

3-axis CNC machining centre especially designed to mill and drill bars or workpieces made of aluminium, PVC, light alloys in general and steel. This machining center is suitable for working the lateral surfaces of the aluminium profile with an angle head tool.

Technical specifications

Model	ONIX 3000 - 3 axis
Dimensioni (LxPxH)	4600x1675x2260 mm - 182x66x89 in
Dimensions for transport (LxPxH)	4500x1250x2300 mm - 177,5x50x91 in
Weight	1500 kg - 3308 lb
Nominal power	7kW
Absorbed power	16 A
Voltage	400 V three phase
Frequency	50/60 Hz
Air pressure	7 bar
Accuracy	0.1 mm - 0.004 in
Electrospindle power S1	4 kW - 0/18000 rpm
Maximum torque	3.7 Nm a 12000 rpm
Tool holder adapter	ISO 30
Spindle cooling system	Electric fan
Operation area	1
Machinable sides n°	1 (3 sides with Angle head)
Standard clamps n°	4 (manual)
Tool magazine	5 tool places (on board the basement)
Clamping force	130 kg per clamp
Zero reference point n°	1 (manual)
Spray nozzles for lubrication	1 on the electrospindle
Tank capacity	2.2 litres
Slides greasing	Manual
Operating temperature range	From 10 to 35 °C
Humidity	75 %
Standard colors	RAL 7032 / RAL 5018
Chip conveyor system	Chip conveyor plate
Machine safety	Safety light screen
Operator interface	Monitor 17" LCD
USB port	On the control panel
Software	ITALSOFT CAD-CAM